

NO.	LAUREL COUNTY	FG-FGA	FT-FTA	REB	P	TP	A
23	PAT PARSELEY	0-0	0-0	0	3	0	2
24	LISA DUELD	0-0	0-0	1	0	0	0
44	MCKENZIE H. THOMPSON	6-11	2-2	5	1	4	0
11	NASCHEE D. THOMPSON	4-10	0-0	4	1	8	1
55	MELISSA HUNTER	0-0	0-0	1	0	0	0
5	KONNIE IRVIN	1-1	0-0	0	0	2	3
34	HOLLIE JAMES	0-1	0-0	1	1	0	2
20	JAN GAYLAND	0-1	0-0	0	1	0	0
		-	-				
		-	-				
		-	-				
		-	-				
		-	-				
		-	-				
		-	-				
TOTALS		11-24	2-2	12	7	24	8

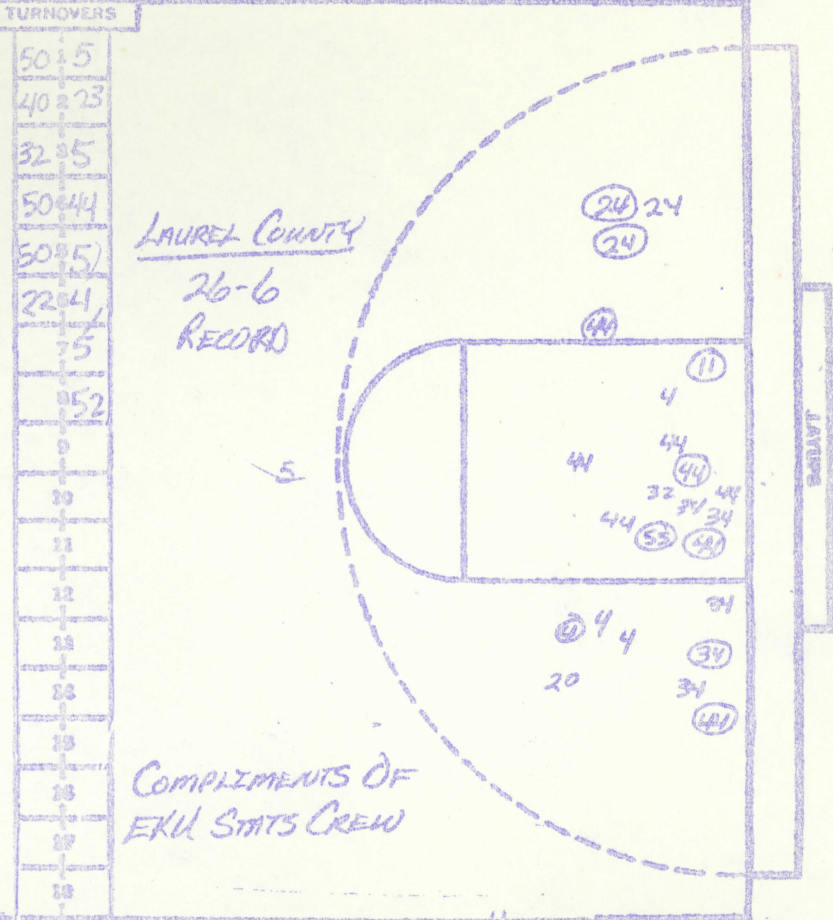
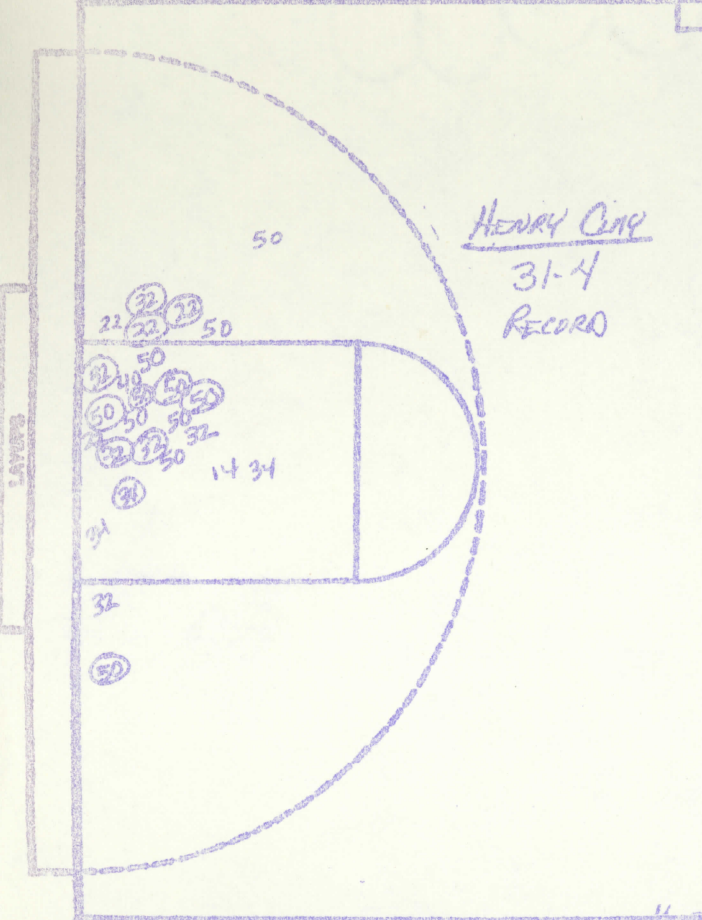
PERCENTS 45.8 100.0 2 TEAM REBOUNDS (NOT IN TOTAL)

NO.	HENRY CLAY	FG-FGA	FT-FTA	REB	P	TP	A
22	LESLIE NICHOLS	3-4	3-8	6	0	9	0
50	BELITTA CRUTCHER	4-9	0-0	3	2	8	0
46	BETH LEONARD	0-2	0-0	1	2	0	1
22	LISA MOSES	1-4	0-0	2	0	2	1
12	SHELIA OWEN	0-1	0-0	1	1	0	0
42	CHARLENE SIMS	0-0	0-0	0	0	0	0
		-	-				
		-	-				
		-	-				
		-	-				
		-	-				
		-	-				
		-	-				
		-	-				
		-	-				
		-	-				
TOTALS		8-20	3-8	16	5	19	2

PERCENTS 40.0 37.5 0 TEAM REBOUNDS (NOT IN TOTAL)

SCORE BY CLAY
LAUREL COUNTY
16-8=24
OFFICIALS Tom Boyer & Tommy Hall

SCORE BY CLAY
HENRY CLAY
11-8=19



turnovers

50	5
40	23
32	35
50	44
50	55
22	41
5	5
52	
9	
20	
11	
12	
13	
23	
19	
18	
17	
16	
15	

NO.	HENRY CLAY	FG-FGA	FT-FTA	RD	P	TP	A
32	LESLIE NICHOLS	8-11	13-19	13	1	29	2
50	BELITTA CROWLEY	9-20	0-2	9	2	18	2
40	BETH LEONARD	0-4	0-2	7	4	0	1
22	LISA MOSES	3-8	0-0	3	0	6	3
12	SHEILA OWEN	0-1	0-0	1	1	0	0
42	DARLENE SIMS	0-0	0-0	0	0	0	0
34	TOYA TICHENOR	0-2	0-0	0	0	0	0
10	FELICIA FISHER	0-0	0-0	0	0	0	0
24	KATHY JONES	0-0	0-0	0	0	0	0
14	JANE KISER	0-1	0-0	0	0	0	0
		-	-				
		-	-				
		-	-				
		-	-				
		-	-	30B,			
TOTALS		20-47	13-23	36	8	53	8
PERCENTS		42.6	56.5	2	TEAM REBOUNDS (NOT IN TOTAL)		

NO.	LAUREL COUNTY	FG-FGA	FT-FTA	RD	P	TP	A
23	PAT PARSLEY	0-0	0-0	0	4	0	3
24	LISA PHELPS	2-3	0-0	1	2	4	0
44	MICHELLE HUTCHINS	10-19	4-6	9	3	24	0
11	MARSHA PENNINGTON	5-11	0-0	8	2	10	1
55	MELISSA ANDREWS	1-2	0-0	4	0	2	1
5	KONNIE IRVIN	1-2	0-0	2	1	2	4
34	HOLLIE JAMES	1-6	0-0	1	4	2	4
20	JAN GARLAND	0-3	0-0	0	1	0	0
4	BOBBIE WHITE	1-4	0-0	2	1	2	1
25	MARLA TROSPER	0-0	0-0	0	0	0	0
32	SUSAN HAVES	0-1	0-0	0	0	0	0
52	LISA GRAY	0-0	0-0	0	1	0	0
		-	-				
		-	-	10R.			
TOTALS		21-51	4-6	28	19	46	14
PERCENTS		41.1	66.7	3	TEAM REBOUNDS (NOT IN TOTAL)		

SCORE BY OHAS
OFFICIALS: JAN BAUER & TOMMY HALL
ATTENDANCE: SESTON FIVE

HENRY CLAY
11-8-15-19=53

LAUREL COUNTY
16-8-8-14=46